

THURSDAY, 21 NOVEMBER, 2024

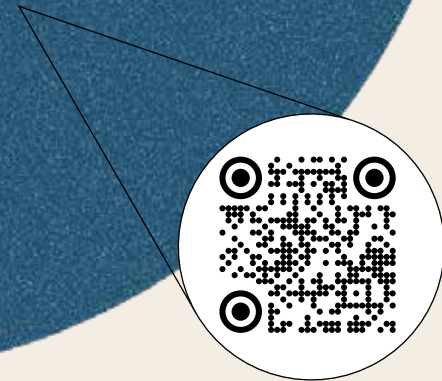
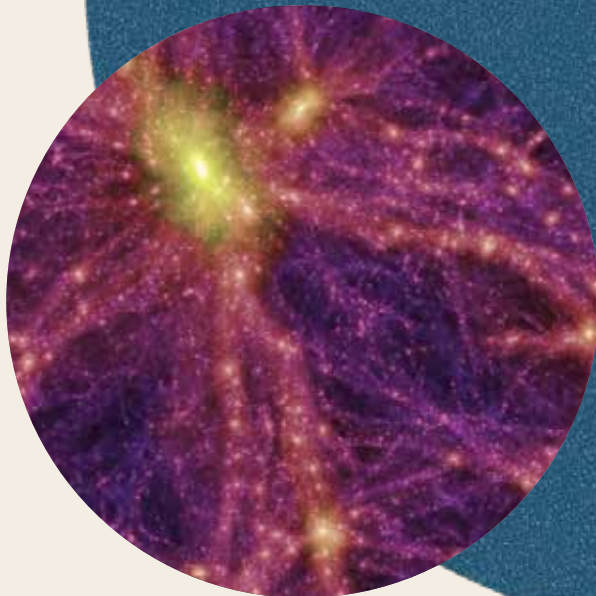
7:00–9:00pm

SFSU THORNTON HALL, 4TH FLOOR

FREE



Scientific Talks
Planetarium Show
Observing with
Telescopes



Speaker: Blanca Nino

FROM COLLISIONS TO COSMIC ORIGINS: The Glauber Model in Nuclear Physics

The Glauber Model is a key theoretical tool in nuclear physics used to understand high-energy collisions between atomic nuclei. Named after physicist Roy J. Glauber, it helps predict how particles within nuclei interact when they collide, akin to cars in a high-speed crash. By analyzing these interactions, scientists can explore the fundamental structure of matter and the forces that govern it. This model is crucial for experiments in particle accelerators, aiding in the study of the universe's tiniest building blocks and the conditions just after the Big Bang.